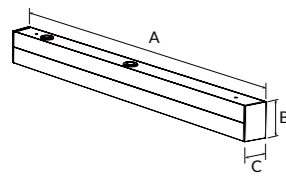




# ML27 NEW Mirror light



ML27 LED mirror light combines quick install with no screws on surface design. Aluminum lamp body offers great thermal management. It adopts high lumen SMD light source 120lm/W and high transmittance milk lamp shade. 3CCT changeable and DALI dimming features are available, 600mm/900mm/1200mm length for option. IP40 widely used for dresser room.

- ▶ 160°x110° IP44
- ▶ DALI Flicker Free S.L.B.E. SWITCH 2 in 1
- ▶ AC 220-240V PF≥0.9 CRI≥80
- ▶ SAA RoHS CE

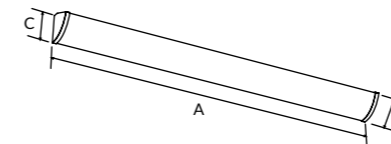
Code	Watt	Size(AxBxCmm)	Lumen(±5%)	N.W/pc(kgs)	Q'ty/CTN
ML27-600-12W	12W	600x72x46	1600lm	1.00	6PCS
ML27-900-20W	20W	900x72x46	2600lm	1.30	6PCS
ML27-1200-32W	32W	1200x72x46	4000lm	1.60	6PCS

CCT  3000K  4000K  5000K  5700K

Finish  White  Black



# ML29 NEW Mirror light



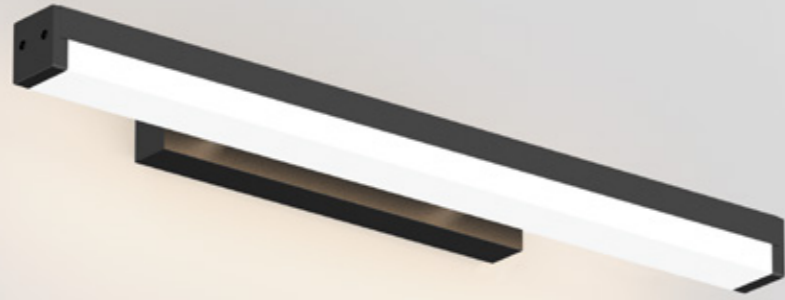
ML29 LED mirror light like a rainbow shape design. It adopts high lumen SMD light source 100lm/W with wide beam angle 110°. IP44 waterproof and 3-CCT changeable are available.

- ▶ 110° IP44
- ▶ Flicker Free S.L.B.E. SWITCH 3 in 1
- ▶ AC 200-240V PF≥0.9 CRI≥80
- ▶ SAA RoHS CE

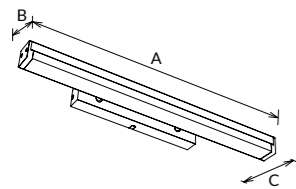
Code	Watt	Size(AxBxCmm)	Lumen(±5%)	N.W/pc(kgs)	Q'ty/CTN
ML29-450-6W	6W	450x66x72	600lm	0.54	6PCS
ML29-450-6W-C3	6W	450x66x72	600lm	0.54	6PCS
ML29-580-10W	10W	580x66x72	1000lm	0.70	6PCS
ML29-580-10W-C3	10W	580x66x72	1000lm	0.70	6PCS
ML29-860-15W	15W	860x66x72	1500lm	1.04	6PCS
ML29-860-15W-C3	15W	860x66x72	1500lm	1.04	6PCS

CCT  3000K  4000K  5000K  5700K

Finish  White



# ML18 Mirror light



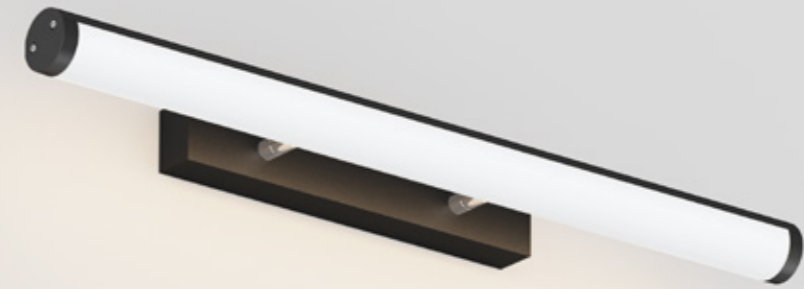
ML18 is a super design mirror light, it adopts high transmittance PC lampshade and AL6063 aluminum lamp body. High lumen SMD LED with 110lm/W light effect, be available of interchangeable CCT by slide switch. It's elegant design, perfect details to create a sense of stylish. Widely be used in Hotel, Shopping mall, home, restaurant, etc.

- ▶ 120° IP40
- ▶ Flicker Free SLIDE SWITCH 3 in 1
- ▶ AC 100-240V PF ≥ 0.9 CRI ≥ 80
- ▶ SAA RoHS CE

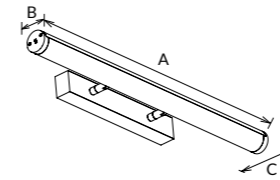
Code	Watt	Size(AxBxCmm)	Lumen(±5%)	N.W/pc(kgs)	Q'ty/CTN
ML18-580-10W	10W	580x50x111	1150lm	0.74	12PCS
ML18-860-15W	15W	860x50x111	1950lm	0.96	12PCS
ML18-1140-20W	20W	1140x50x111	2430lm	1.18	12PCS

CCT — 3000K 4000K 5000K 5700K

Finish — White Black



# ML01 Mirror light



ML01 mirror light with concise and elegant design, adopting high transmittance PC lampshade, AL6063 aluminum lamp body, high lumen SMD LED with 110lm/W. Interchangeable CCT by slide switch is available, Brush Nickel/Chrome plated/Matt Black multiple finish color for option.

- ▶ 120° IP40
- ▶ Flicker Free SLIDE SWITCH 3 in 1
- ▶ AC 100-240V PF ≥ 0.9 CRI ≥ 80
- ▶ SAA RoHS CE

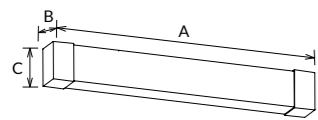
Code	Watt	Size(AxBxCmm)	Lumen(±5%)	N.W/pc(kgs)	Q'ty/CTN
ML01-580-10W	10W	580x41x111	1180lm	0.66	12PCS
ML01-860-15W	15W	860x41x111	1845lm	0.87	12PCS
ML01-1140-20W	20W	1140x41x111	2300lm	1.03	12PCS

CCT — 3000K 4000K 5000K 5700K

Finish — White Black Silver Nickel Brushed



# ML15 Mirror light



ML15 Mirror lamp has a wide beam angle, it adopts 2835 SMD high lumen light source to reach high efficiency, 120lm/W for standard version, 110lm/W for sensor version. PC diffuser provides a uniform light output. The whole lamp is IP44 IK06 protection level, dismantlable design makes a more convenient installation. Interchangeable CCT (3000/4000/5700k) with slide switch and microwave sensor option can also make users has a great experience.

- ▶ 140°
- ▶
- ▶
- ▶

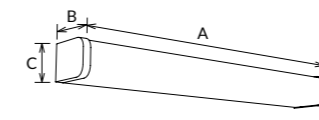
Code	Watt	Size(AxBxCmm)	Lumen(±5%)	N.W/pc(kgs)	Q'ty/CTN
ML15-450-8W	8W	450x58x85	880lm	0.58	12PCS
ML15-600-10W	10W	600x58x85	1200lm	0.71	12PCS

CCT ——— 3000K ——— 4000K ——— 5700K

Finish ——— White Black



# ML13 Mirror light



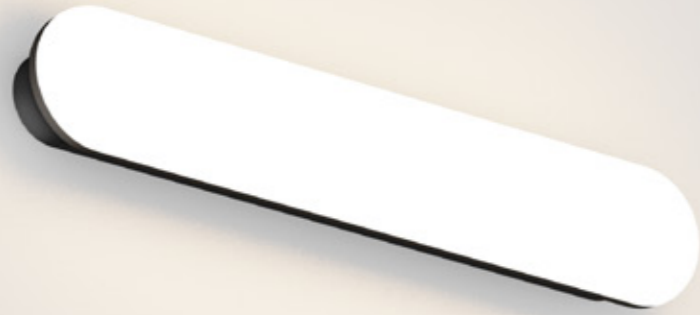
ML13 mirror light is an easy dismantlable design, adopting high transmittance PC lampshade and high lumen SMD LED with 120lm/W, flicker free internal driver. Full PC material makes a lighter weight. Interchangeable CCT by slide switch and sensor function for 600mm/900mm is available, replaceable end cap with white, black or silver color options.

- ▶ 120°
- ▶
- ▶
- ▶

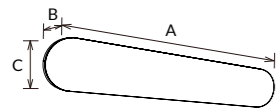
Code	Watt	Size(AxBxCmm)	Lumen(±5%)	N.W/pc(kgs)	Q'ty/CTN
ML13-480-8W	8W	480x77.5x61	1010lm	0.45	12PCS
ML13-600-10W	10W	600x77.5x61	1270lm	0.62	12PCS
ML13-900-15W	15W	900x77.5x61	1900lm	0.82	12PCS

CCT ——— 3000K ——— 4000K ——— 5000K ——— 5700K

Finish ——— White Black



# ML17 Mirror light



ML17 is a wall lamp which adopts anti-UV PC cover with uniform light output and high lumen SMD light source, 110lm/W. IP54 waterproof can be used in restroom. Interchangeable CCT with slide switch and microwave sensor are available. Button on side for On/Off, which makes a convenient operation.

- ▶ 120°
- ▶
- ▶
- ▶

Code	Watt	Size(AxBxCmm)	Lumen(±5%)	N.W/pc(kgs)	Q'ty/CTN
ML17-450-10W	10W	450x61x80	1100lm	0.78	12PCS
ML17-450-13W	13W	450x61x80	1420lm	0.78	12PCS

CCT ——— 3000K 4000K 5000K 5700K

Finish ——— White



LED Wall & Spike light & Mirror light